

# COVID-19 IgM/IgG Rapid Test

**Specimen:** Whole Blood/ Serum/Plasma

Results come out in 10 mins, proven auxiliary to molecular tests

## Use of these tests:

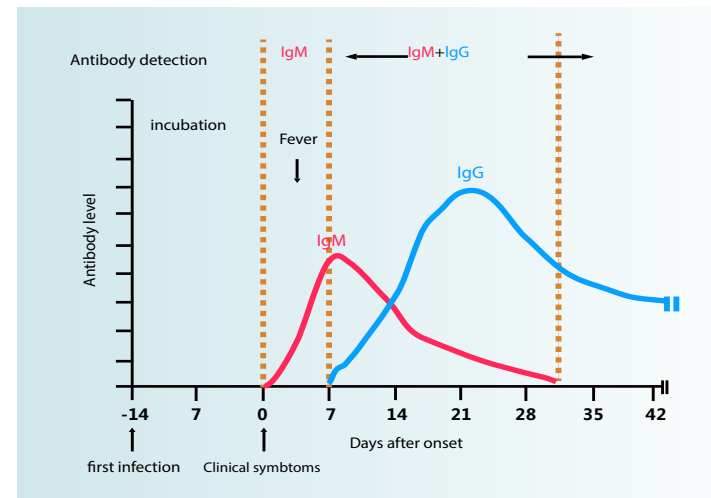
COVID-19 IgM/IgG Rapid Test is an in vitro diagnostic test for the qualitative determination of COVID-19 IgM and IgG antibodies in human whole blood (finger tip), serum or plasma.

The test kit consists of test devices and buffer. It is for in vitro diagnostic use only, and can be used in point-of-care testing settings and central laboratories.

## Performance

The results show that the relative specificity is 100%; the relative sensitivity is 97.1%.

The accuracy is 98.67%.



Clinical Performance of negative sample		Clinical Performance of positive sample	
Negative Cases (By PCR)	80	Positive Cases (By PCR)	70
Negative coincidence rate (COVID-19 IgM)	80 (100%)	Positive coincidence rate (COVID-19 IgM)	68 (97.1%)
Negative coincidence rate (COVID-19 IgG)	80 (100%)	Positive coincidence rate (COVID-19 IgG)	67 (95.7%)
Negative coincidence rate (Total)	80 (100%)	Positive coincidence rate (Total)	68 (97.1%)

The results show that the relative specificity is 100%; the relative sensitivity is 97.1%. The accuracy is 98.5%.

## Product package



20 Tests / box

Lancet:20pcs

Buffer:2\*2mL

Alcohol Pad:20pcs

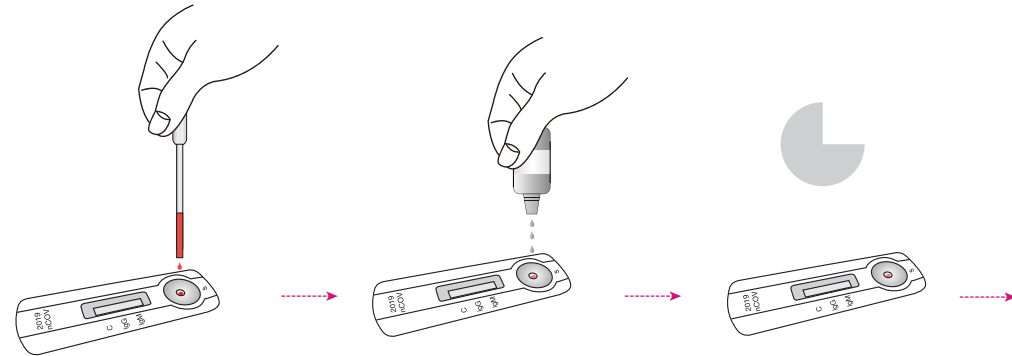


## Method of operation of kit illustrated

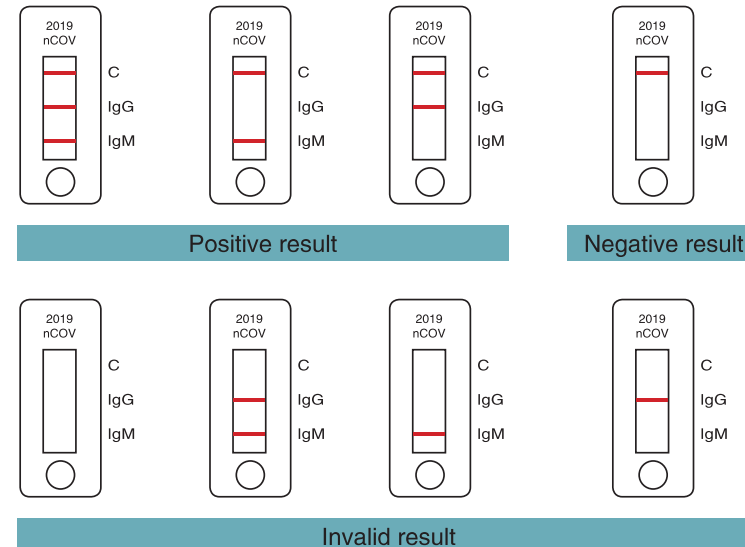
Apply 10 $\mu$ L of serum, plasma or whole blood to the sample well.

Add 2 drops of buffer to sample well

Waiting for 10 minutes reading result



## Result



**THANKS!**



Add: No.9 Changyang Rd.,  
Changzhou, Jiangsu, China 213149  
Whatsapp: 0086-18551316090  
E-mail: [cathy.meng@wellbioscience.com](mailto:cathy.meng@wellbioscience.com)/  
[sales@wellbioscience.com](mailto:sales@wellbioscience.com)  
F-Web: [wellbioscience.com](http://wellbioscience.com)  
T: +86-519-8019-1660  
M: +86-18551316090